



JFE

JFE刀具用不锈钢



JFE刀具用不锈钢

JFE钢铁在刀具用马氏体不锈钢方面拥有丰富的生产经验。我司对成分进行严格控制，以减少材料引起的硬度差异。

生产钢种

钢种	规格	成分简介	淬火后的硬度示例		特点	用途
			Hv	HRC		
SUS410	JIS规格	13Cr-0.1C	430	43	即13Cr不锈钢。	西餐具、机械零件
SUS420J1	JIS规格	13Cr-0.2C	530	51	该钢种适用于要求耐磨性的部位。	西餐具、刀具、直尺
SUS420J2	JIS规格	13Cr-0.3C	630	57	该钢材的淬火硬度比SUS420J1更高。	刀具
EN1.4116	EN规格	14Cr-0.5C	700	60	该钢材的淬火硬度比SUS420J2更高。	高级厨刀

Cr: 铬、C: 碳

化学成分

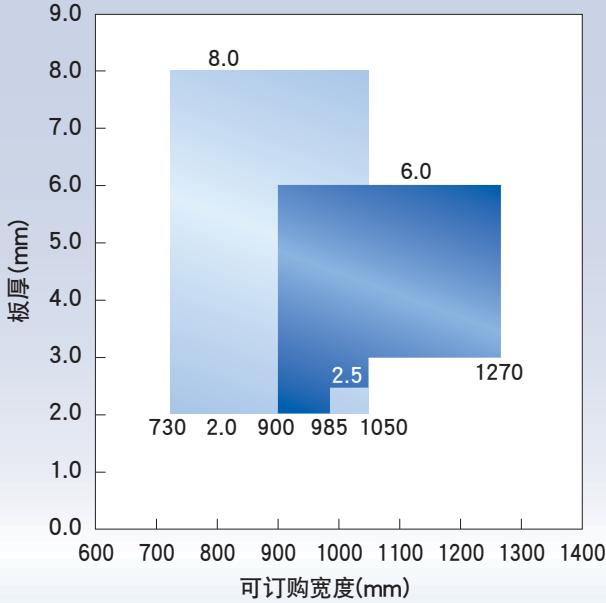
钢种	规格	C (碳)	Si (硅)	Mn (锰)	P (磷)	S (硫)	Cr (铬)	Mo (钼)	V (钒)	N (氮)
SUS410	JIS规格	≤0.15	≤1.00	≤1.00	≤0.040	≤0.030	11.50~13.50	—	—	—
SUS420J1	JIS规格	0.16~0.25	≤1.00	≤1.00	≤0.040	≤0.030	12.00~14.00	—	—	—
SUS420J2	JIS规格	0.26~0.40	≤1.00	≤1.00	≤0.040	≤0.030	12.00~14.00	—	—	—
EN1.4116	EN规格	0.45~0.55	≤1.00	≤1.00	≤0.040	≤0.015	14.00~15.00	0.50~0.80	0.10~0.20	—

机械性能 退火状态 (我司出货时)

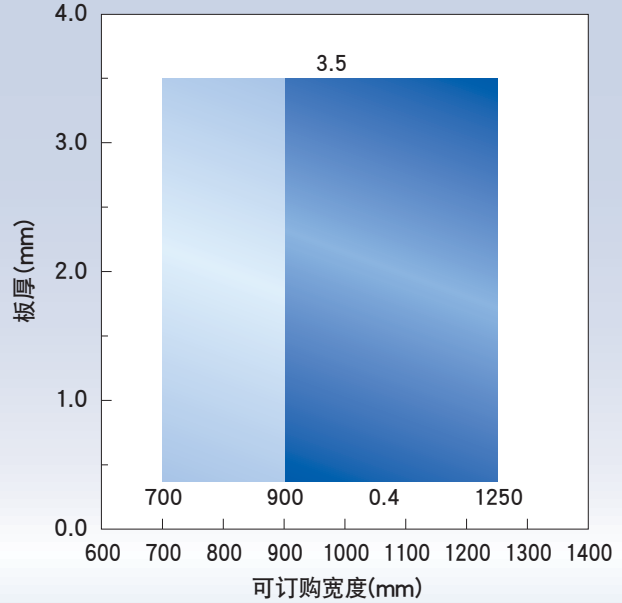
钢种	规格	0.2%屈服强度 N/mm ²	抗拉强度 N/mm ²	延伸率 %	硬度	
					HRB	Hv
SUS410	JIS规格	≥205	≥440	≥20	≤93	≤210
SUS420J1	JIS规格	≥225	≥520	≥18	≤97	≤234
SUS420J2	JIS规格	≥225	≥540	≥18	≤99	≤247
EN1.4116	EN规格	—	≥850	≥12	≤100	≤280

生产尺寸

SUS420J1、J2 热轧钢带



SUS420J1、J2 冷轧钢带 (2B、2D)



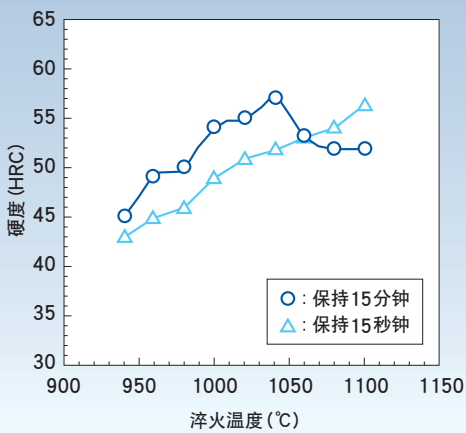
■ : 可生产 ■ : 需提前咨询

EN1.4116请垂询。

参考资料 淬火和回火特性示例

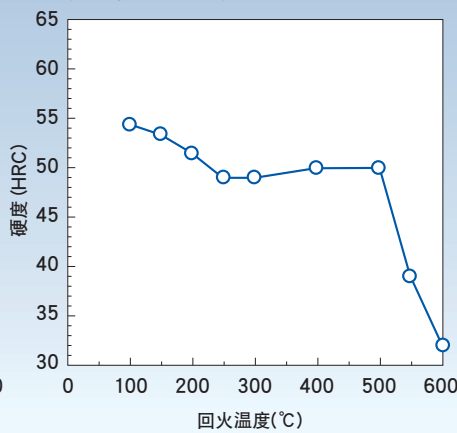
SUS420J2 冷轧钢材的淬火特性示例

板厚：1.5mm
冷却条件：空冷



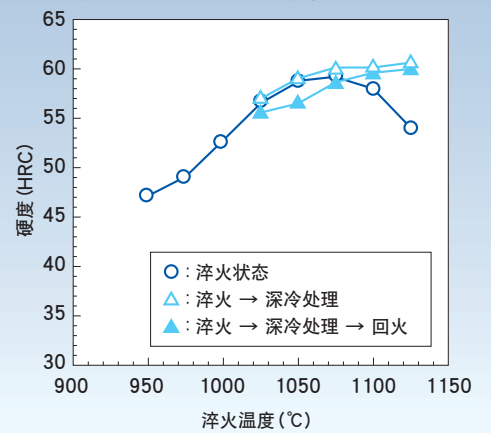
SUS420J2 冷轧钢材的回火特性示例

板厚：1.5mm
淬火条件：在1040°C下保持15分钟后空冷
淬火状态的硬度 HRC=57
回火保持时间：2小时



EN1.4116 热轧钢材的淬火、回火特性示例

板厚：2.5mm
淬火保持时间：15分钟
回火条件：在200°C下保持30分钟
深冷处理条件：在-78°C下保持30分钟



JFE 钢铁 株式会社<http://www.jfe-steel.co.jp/ch/>**HEAD OFFICE**

Hiibiya Kokusai Building, 2-3 Uchisaiwaicho 2-chome, Chiyodaku, Tokyo 100-0011, Japan Phone: (81)3-3597-3111 Fax: (81)3-3597-4860

**ASIA PACIFIC /
亚洲及太平洋地区****SEOUL**JFE Steel Korea Corporation
6th Floor, 410, Teheran-ro, Gangnam-gu, Seoul
135-570, Korea
(Geumgang-Tower, Daechi-dong)
Phone: (82)2-3468-4130 Fax: (82)2-3468-4137**BEIJING (北京)**JFE Steel Corporation Beijing
1009 Beijing Fortune Building No.5, Dongsanhuan
North Road, Chaoyang District, Beijing, 100004,
P.R.China
(JFE(北京)钢铁技术发展有限公司)
100004 中华人民共和国北京市朝阳区东三环北路5号
北京发展大厦1009室
Phone: (86)10-6590-9051 Fax: (86)10-6590-9056**SHANGHAI (上海)**JFE Consulting (Shanghai) Co., Ltd.
Room 801, Building A, Far East International Plaza,
319 Xianxia Road, Shanghai 200051, P.R.China
(杰富意(上海)商务咨询有限公司)
200051 中华人民共和国上海市长宁区仙霞路319号
远东国际广场A座801室
Phone: (86)21-6235-1345 Fax: (86)21-6235-1346**GUANGZHOU (广州)**JFE Consulting (Guangzhou) Co., Ltd.
Room 3901 Citic Plaza, 233 Tian He North Road,
Guangzhou, 510613, P.R.China
(杰富意(广州)咨询有限公司)
510613 中华人民共和国广州市天河区河北路233号
中信广场3901室
Phone: (86)20-3891-2467 Fax: (86)20-3891-2469**MANILA**JFE Steel Corporation, Manila Office
23rd Floor 6788 Ayala Avenue, Oledan Square,
Makati City, Metro Manila, Philippines
Phone: (63)2-886-7432 Fax: (63)2-886-7315**HO CHI MINH CITY**JFE Steel Vietnam Co., Ltd.
Unit 1401, 14th Floor, Kumho Asiana Plaza,
39 Le Duan Street, Dist 1, HCMC, Vietnam
Phone: (84)8-3825-8576 Fax: (84)8-3825-8562**HANOI**JFE Steel Vietnam Co., Ltd., Hanoi Branch
Unit 510, 5th Floor, Hanoi Press Club, 59A Ly Thai To
Street, Hoan Kiem Dist., Hanoi, Vietnam
Phone: (84)4-3936-7776 Fax: (84)4-3936-7775**BANGKOK**JFE Steel (Thailand) Ltd.
22nd Floor, Abdulrahim Place 990, Rama IV Road,
Bangkok 10500, Thailand
Phone: (66)2-636-1886 Fax: (66)2-636-1891**SINGAPORE**JFE Steel Asia Pte. Ltd.
16 Raffles Quay, No.15-03, Hong Leong Building,
048581, Singapore
Phone: (65)6220-1174 Fax: (65)6224-8357**JAKARTA**JFE Steel Corporation, Jakarta Office
6th Floor Summitas II, JL Jendral Sudirman Kav.
61-62, Jakarta 12190, Indonesia
Phone: (62)21-522-6405 Fax: (62)21-522-6408**NEW DELHI**JFE Steel India Private Limited
806, 8th Floor, Tower-B, Unitech Signature Towers,
South City-I, NH-8, Gurgaon 122001, Haryana, India
Phone: (91)124-426-4981 Fax: (91)124-426-4982**MUMBAI**JFE Steel India Private Limited, Mumbai Office
308, A Wing, 215 Atrium, Andheri - Kurla Road,
Andheri (East), Mumbai - 400093, Maharashtra, India
Phone: (91)22-3076-2760 Fax: (91)22-3076-2764**CHENNAI**JFE Steel India Private Limited, Chennai Office
Ground Floor, SPIC Annexe Building, No.86, Mount
Road, Guindy, Chennai - 600032, Tamil Nadu, India
Phone: (91)44-2230-0285 Fax: (91)44-2230-0287**BRISBANE**JFE Steel Australia Resources Pty Ltd.
Level28, 12 Creek Street, Brisbane QLD 4000
Australia
Phone: (61)7-3229-3855 Fax: (61)7-3229-4377**EUROPE and MIDDLE EAST /
欧洲及中东地区****LONDON**JFE Steel Europe Limited
15th Floor, The Broadgate Tower, 20 Primrose Street,
London EC2A 2EW, U.K.
Phone: (44)20-7426-0166 Fax: (44)20-7247-0168**DUBAI**JFE Steel Corporation, Dubai Office
P.O.Box 261791 LOB19-1208, Jebel Ali Free Zone
Dubai, U.A.E.
Phone: (971)4-884-1833 Fax: (971)4-884-1472**NORTH, CENTRAL and SOUTH AMERICA /
北美洲、中美洲及南美洲地区****NEW YORK**JFE Steel America, Inc.
600 Third Avenue, 12th Floor, New York, NY 10016,
U.S.A.
Phone: (1)212-310-9320 Fax: (1)212-308-9292**HOUSTON**JFE Steel America, Inc., Houston Office
10777 Westheimer, Suite 230, Houston, TX 77042,
U.S.A.
Phone: (1)713-532-0052 Fax: (1)713-532-0062**MEXICO CITY**JFE Steel America, Inc., Mexico Office
Ruben Dario #281, 1404 Col. Bosque de
Chapultepec, C.P. 11580, Mexico, D.F. Mexico
Phone: (52)55-5985-0097 Fax: (52)55-5985-0099**RIO DE JANEIRO**JFE Steel do Brasil LTDA
Praia de Botafogo, 228 Setor B, Salas 508 & 509,
Botafogo, CEP 22250-040, Rio de Janeiro-RJ, Brazil
Phone: (55)21-2553-1132 Fax: (55)21-2553-3430**请顾客注意**

- 本商品目录记载的特性值等技术信息，除规格值以外，没有任何保证意义。
- 本商品目录记载的产品，根据使用目的、使用条件等，其性能、性质有时与记载内容会有所不同。
- 因错误使用本商品目录记载的技术信息等，而发生损害时，本公司概不负责。